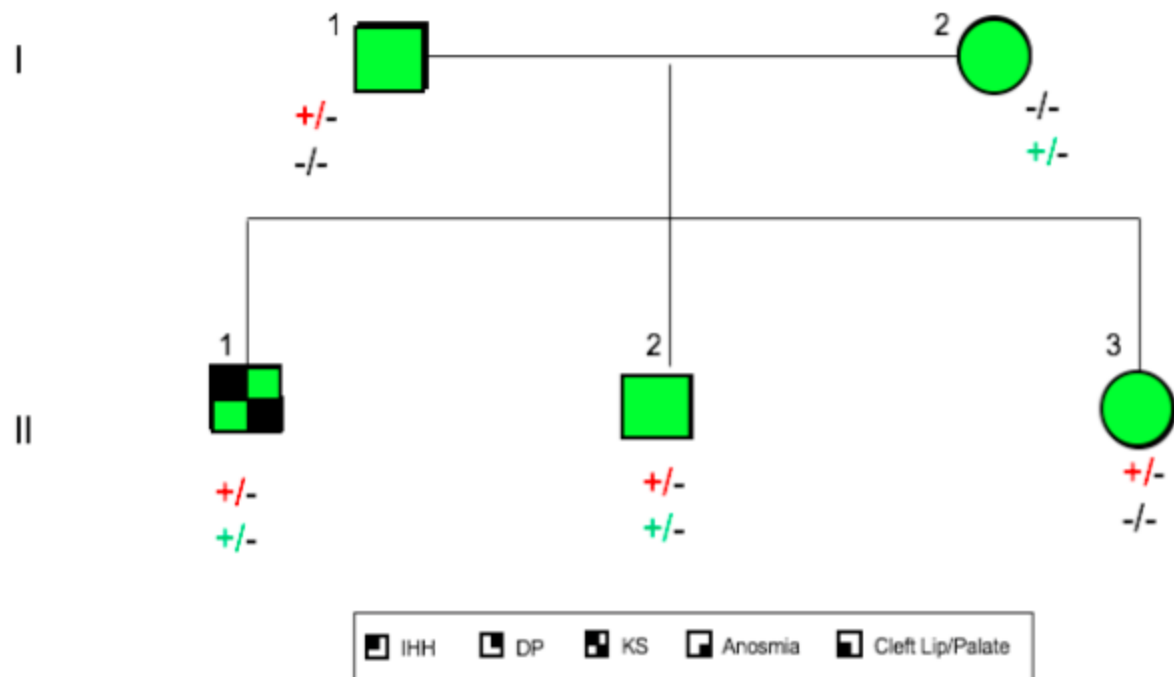


Supp Figure 6: Detected RSVs in *SPRY4* and *SEMA3A*.

SPRY4 c.46G>A p.V16I

SEMA3A c.1457C>T p.P486L



Legend: Supp Figure 6 showed segregation of the both RSVs of *SPRY4* and *SEMA3A*. Green color points for samples that DNA was available for genetic screening.