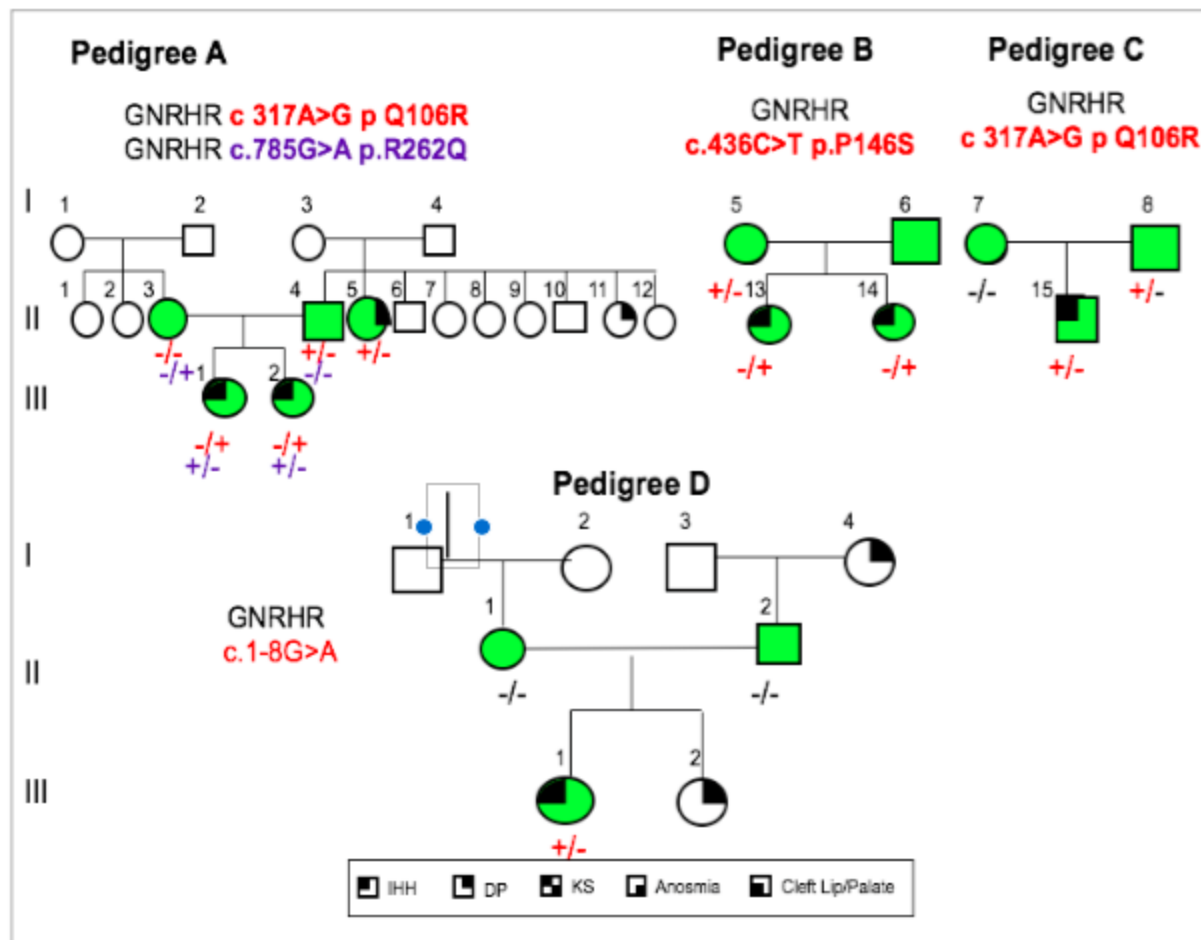


Supp Figure 3: Detected RSVs in *GNRHHR*.



Legend: Supp Figure 3 shown segregation of *GNRHHR* RSVs. After Sanger and Whole Exome sequencing we were able to detect compound heterozygous RSVs in Pedigree A as well as other *GNRHHR* heterozygous RSVs inherited with incomplete penetrance and variable expressivity (Pedigrees A-C). We also discovered a *de novo* *GNRHHR* splice site RSVs (Pedigree D). Green color points for samples that DNA was available for genetic screening.