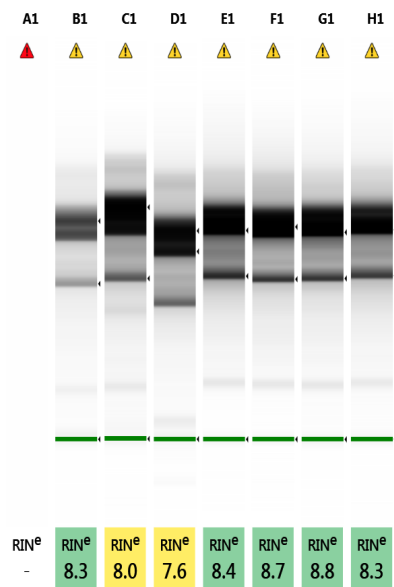
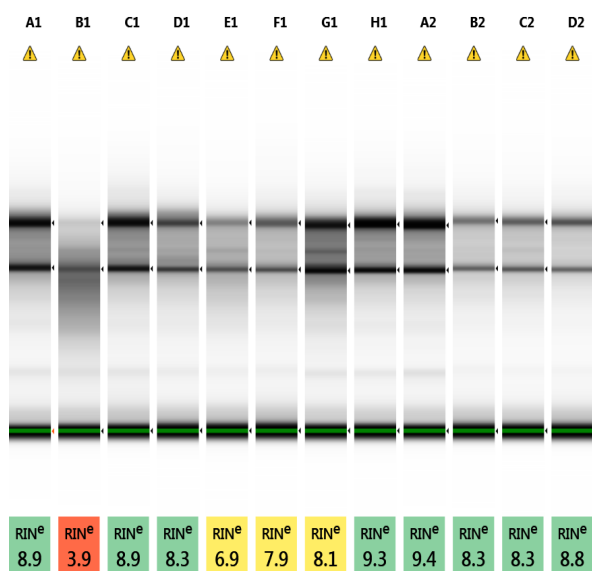


**S1**

**A:** The gel image and RNA Integrity Number (RIN) values were obtained for the RNA samples extracted from the peripheral blood mononuclear cells (PBMCs) of the control group..



**B:** The gel image and RNA Integrity Number (RIN) values were obtained for the RNA samples extracted from the peripheral blood mononuclear cells (PBMCs) of the patient group.